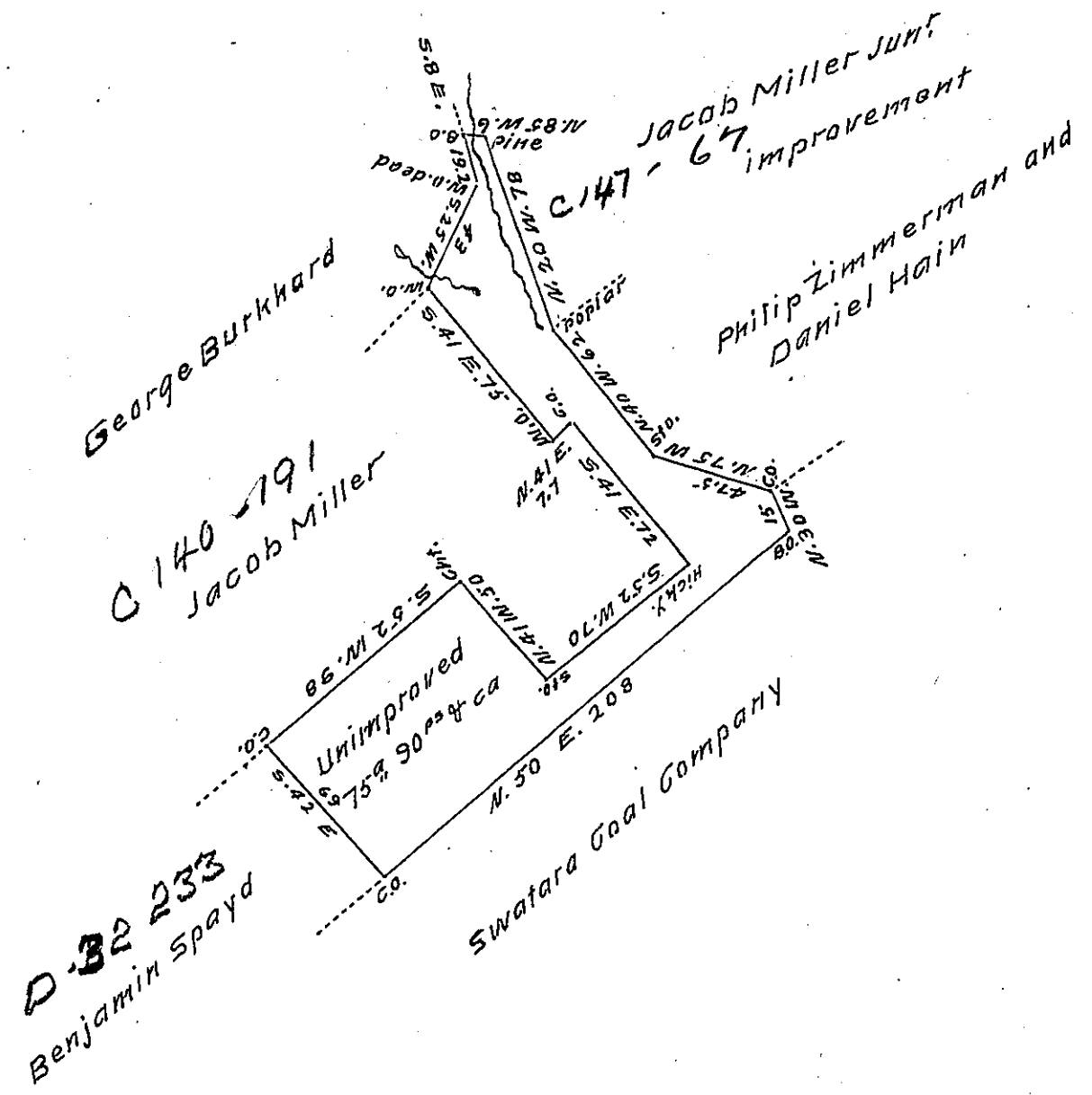


73



Situate in Lower Mahanotonga township Schuylkill County and partly in Pinegrove township in the same county containing seventy five acres and ninety perches and the allowance of six per cent surveyed on the 1st day of July 1829 in pursuance of a warrant dated the 8th day of May 1829 granted John C. Kittleman.

F. LAUDERBRUN, Dep. SUR.

To Gabriel Hiester Esquire
Surveyor General of Penn'a

Schuylkill Co.

IN TESTIMONY that the above is a copy of the original remaining on file in the Department of Internal Affairs of Pennsylvania, made conformably to an Act of Assembly approved the 16th day of February, 1833, I have hereunto set my Hand and caused the Seal of said Department to be affixed at Harrisburg, this Eighteenth day of January 1908

Henry Houder
Secretary of Internal Affairs.